

# Quality. Value. Service.

*Our commitment to you is about more than windows.*



Read more about why Window Mart® has been chosen by so many customers, retailers, and contractors at [windowmart.com](http://windowmart.com)

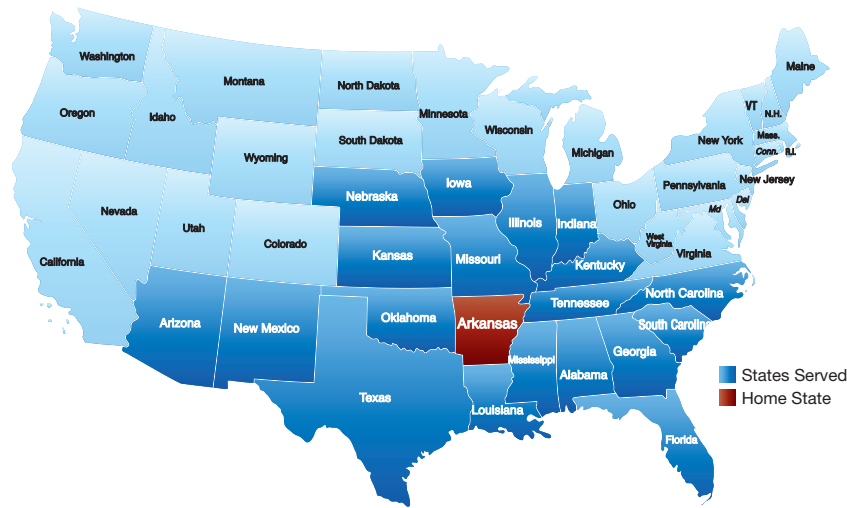


SCAN the Code to  
View our Website.

Building tomorrow's  
better windows... **TODAY**®



# Our Company



Since 1996, Window Mart® has been recognized as one of America's premier manufacturers of vinyl windows and doors for outstanding quality, great value, and unsurpassed customer service in custom manufactured premium vinyl window and door products throughout a twenty-state region.



**MADE IN THE USA CERTIFIED**

**Every Window Mart® window and door product is certified to be made in the USA**

## What does this mean to you?

This certified seal means that all of our products have been put through rigorous testing standards insuring that the components, manufacturing and assembly are truly "Made in America".

**NO OUTSOURCING** Many companies of various products claim that their products are "Made in America", however in many cases the products are assembled in America from components manufactured and shipped from foreign countries.

**RELIABILITY** Throughout generations, American made products have been recognized and respected for the pride and workmanship that has proven to last for years.

**QUALITY** Strenuous testing and regulations assure consumers that the product is produced safely and of the highest standards for quality.

**SUPPORT AMERICA** Purchasing products that have been "Made in the USA Certified" support American jobs and the American economy.



Nothing means more to us than you, our customer. We guarantee your complete satisfaction with the quality of every product that we manufacture and we back it up with one of the best warranties in the industry.



Over **4,000,000** Window Mart® windows have been purchased and installed in homes across America!

**Thank you!**



Building tomorrow's better windows... **TODAY**

Building tomorrow's better windows... **TODAY**



# Quality & Efficiency Understanding Low-E

**SunSHIELD**  
by deceuninck®

**More than 50 million windows featuring SunShield® technology are installed in homes and offices in North America... for good reasons.**

Here are **5** compelling reasons:

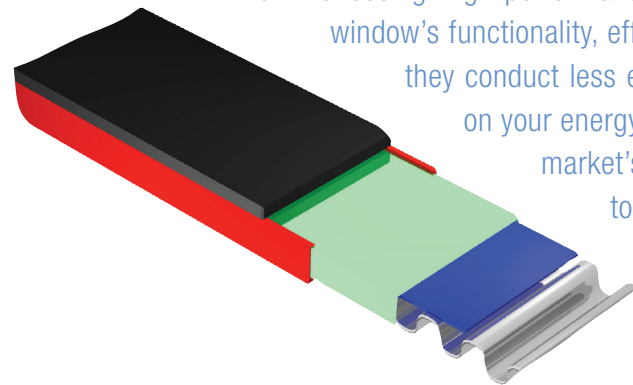
- 1 SunShield® provides superior weatherability**  
*excellent color retention, infrared (heat) reflectance and impact resistance*
- 2 SunShield® outshines the competition**  
*exceeds industry standards and outperforms the competition*
- 3 SunShield® offers dependable color and performance**  
*consistent, reliable, superior color and weatherability*
- 4 SunShield® undergoes uncompromising quality testing**  
*accelerated and real-time weathering tests in certified testing labs located across the country to verify durability in any climate*
- 5 SunShield® meets the needs of today's homeowner**  
*low-maintenance, resistant to rot, insect and microbial damage and 100% recyclable for a more sustainable future*

**Quanex**  
building products

**DURALITE® SPACERS ARE MORE EFFICIENT**  
Envirosealed Windows™ and Doors with Duralite® are designed to meet or exceed Energy Star® requirements.

**METAL FREE**  
SEAL TECHNOLOGY

When purchasing new windows and doors, you'll discover that you have different spacer options to choose from. Choosing high-performance components such as Duralite® can make a real difference in a window's functionality, efficiency, and durability. Duralite® spacers can save you money because they conduct less energy than any other insulating glass spacer, saving you more money on your energy bills. The Duralite® spacer inside a window's insulating unit is also the market's best at deterring moisture and reducing glass condensation, leading to a healthier, more comfortable home.



envirosealed  
windows™

## Comfort Select 36

Window Mart® windows are manufactured with Comfort Select 36 which uses advanced technology adding metal composites into the glass surface during the manufacturing process.

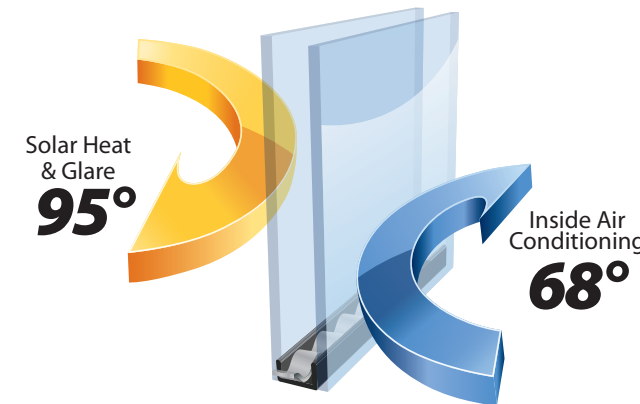
These composites act as an insulating agent due to their ability to reflect heat back to its source. This enables the glass to repel sunlight generated heat away from the home during the summer, while reflecting artificial heat produced during the winter back into the home. Low-E Glass also reduces the potential for health risks or property damage related to the amount of ultraviolet (UV) light and infrared (IR) light that enter into the home through inefficient windows.

### Cool Heat-Blocker

So how cool is Comfort Select 36? Cool enough to be the solution for homes in which solar heat reduction for cooling is a must. Comfort Select 36 has a low solar heat gain coefficient that blocks the heat of the sun, helping your air conditioning to work at peak efficiency and keeping your home cool inside. Comfort Select 36 provides great insulating value, keeping your interior temperatures comfortable.

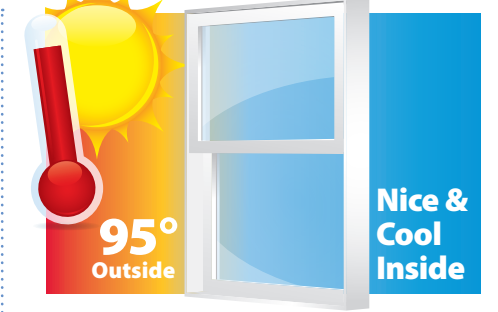
### Warm Insulator

Are you warming up? With Comfort Select 36, winter blues will be a distant memory. Comfort Select 36 has a low-emissivity (Low-E) rating .03, which calculates to a center-of-glass U-Value of .24\*, making it a great insulator in winter. No other glass product provides better insulating value, helping your furnace to do its work to keep your interior temperatures warm and comfortable.



Low-E technology greatly reduces UV light and heat transfer from passing through the window into the home by reflecting it back to its source.

## Summer's HEAT



### How does Low-E work in the summer months?

The Low-E technology creates a barrier that absorbs and reflects a large amount of the thermal energy generated from natural sunlight. By doing so, it prevents this thermal energy from entering directly into the home and causing radiant heating or damaging property through discoloration. Under direct sunlight for longer periods of time, it is not unusual for the glass temperature to be even higher as the insulated Low-E Glass unit works to trap the heat inside the unit, preventing much of it from passing through the window.

## Winter's COLD



### How does Low-E glass work in the winter months?

Low-E Glass is designed to reflect thermal energy back to its source. In the colder winter months, artificially generated heat is produced in the home. This heat is reflected away from the windows reducing heat loss and maintaining ambient temperatures in the home for longer periods of time.

# 7100 SERIES

New Construction Single Hung

SINGLE HUNG | HORIZONTAL SLIDER  
FIXED PICTURE | SPECIALTY SHAPES

*The 7100 Series is a reliable vinyl window design that combines quality and affordability with many optional features making it our most desired custom product.*

## 7100 SERIES

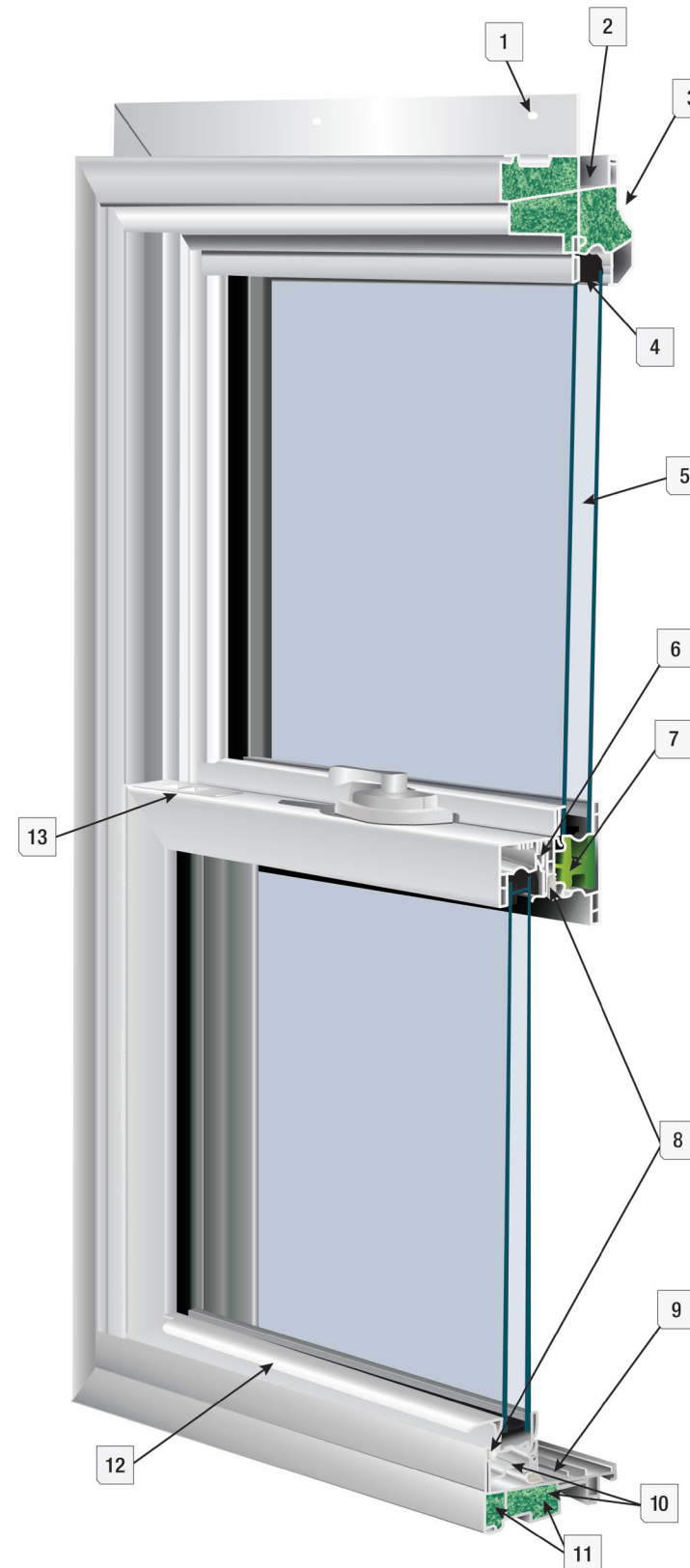
New Construction Single Hung



-  SINGLE HUNG
-  HORIZONTAL SLIDER
-  FIXED PICTURE
-  SPECIALTY SHAPES

| NFRC TEST RATINGS |          |      |
|-------------------|----------|------|
| MODEL             | U-FACTOR | SHGC |
| 7000 PW           | .27      | .27  |
| 7100 SH           | .28      | .26  |
| 7300 SS           | .27      | .26  |

\*\*Ratings supplied with DS CS 36/Duralite®/Argon/Grids



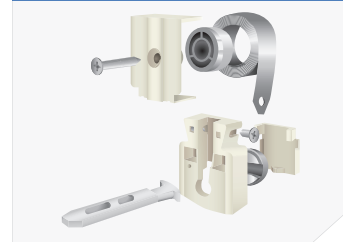
### FEATURES

- 1 Extruded Nail Fin (removable for replacement applications)
- 2 Fully Extruded Recessed J-Channel
- 3 Beveled Exterior Main-Frame
- 4 Quanex Building Products Most Advanced Warm Edge Spacer Duralite®
- 5 3/4" Insulated Double Strength Glass Unit
- 6 Fully Extruded Interlock at Sash Locking Rail
- 7 Reinforced Innergy™ Rigid Thermal Interlock System Available (standard in meeting rail only)
- 8 Multi-Point Double Barrier-Fin Weather Stripping System Along Sash and Main-Frame
- 9 Sloped Sill Design
- 10 Multi-Chambered Sash and Main-Frame
- 11 Foam-Filled Frame Available
- 12 Fully Extruded Lift Rail
- 13 E-Z Tilt™ Sash Design with Routed Flush Mount Dual Tilt Latches
- 14 Triple-Pane Glass Options Available
- 15 Uniframe Twin Option Available

### STANDARD

- Sunshield® Virgin Vinyl with Titanium Alloy Compound
- Main-Frame Jamb Depth Dimension of 3 1/4"
- Patented Fusion Welded Frame and Sash
- Constant Force Balance System

#### Constant Force Balance System



#### Available Colors



# 7200 SERIES

New Construction Double Hung

DOUBLE HUNG | HORIZONTAL SLIDER  
FIXED PICTURE | SPECIALTY SHAPES

*The 7200 Series is a reliable vinyl window design that combines quality and affordability with many optional features making it our most desired custom product.*

## 7200 SERIES

New Construction Double Hung



DOUBLE HUNG



HORIZONTAL SLIDER



FIXED PICTURE

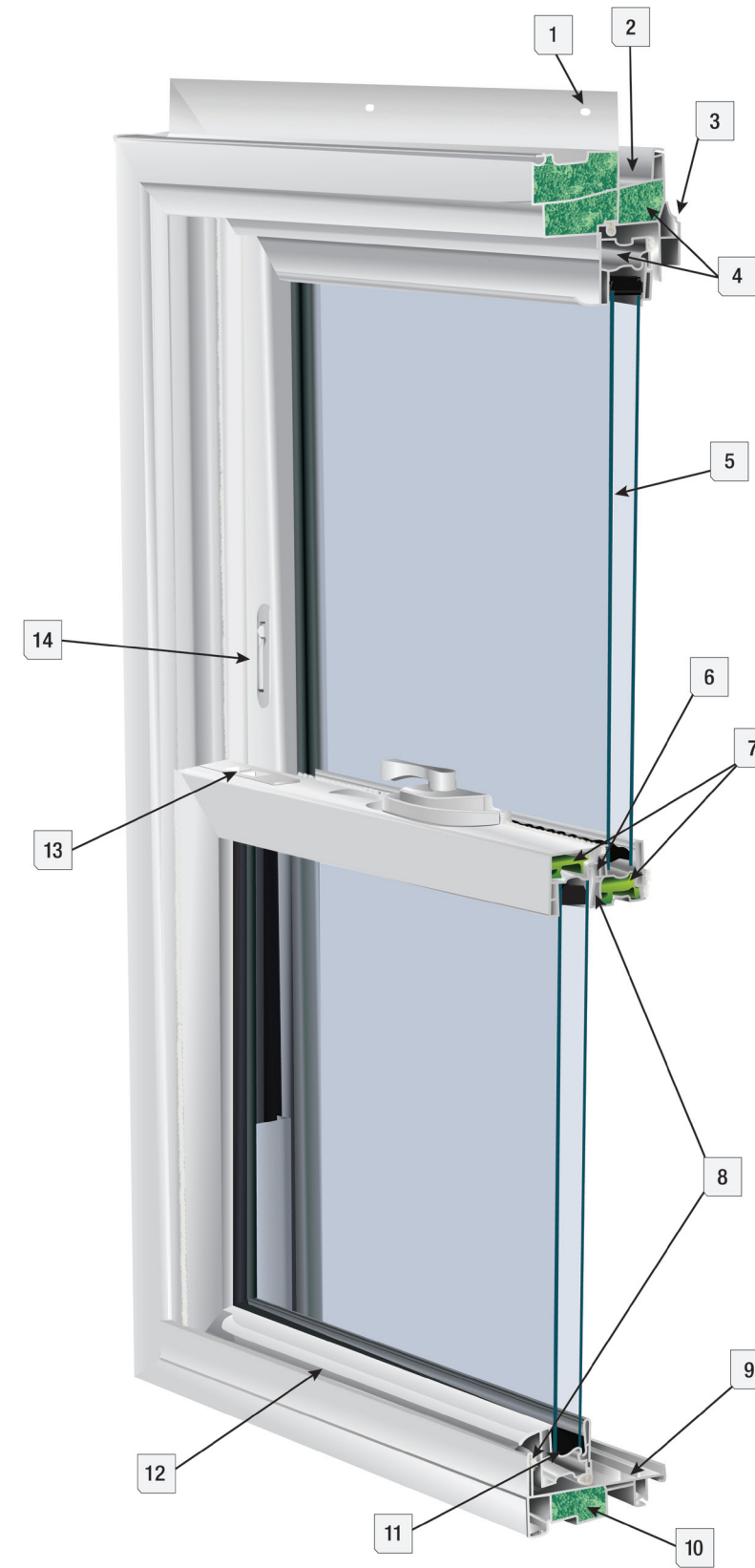


SPECIALTY SHAPES

### NFRC TEST RATINGS

| MODEL   | U-FACTOR | SHGC |
|---------|----------|------|
| 7200 DH | .28      | .26  |

\*\*Ratings supplied with DS CS 36/Duralite®/Argon/Grids



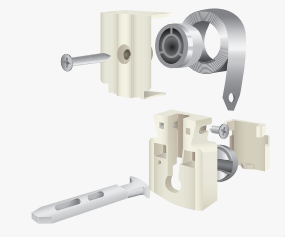
### FEATURES

- 1 Extruded Nail Fin (removable for replacement applications)
- 2 Fully Extruded Recessed J-Channel
- 3 Beveled Exterior Main-Frame
- 4 Multi-Chambered Sashes and Main-Frame
- 5 3/4" Insulated Double Strength Glass Unit
- 6 Fully Extruded Interlock at Sash Locking Rail
- 7 Reinforced Innergy™ Rigid Thermal Interlock System Available
- 8 Multi-Point Double Barrier-Fin Weather Stripping System Along Sashes and Main-Frame
- 9 Sloped Sill Design
- 10 Foam-Filled Frame Available
- 11 Quanex Building Products Most Advanced Warm Edge Spacer Duralite®
- 12 Fully Extruded Lift Rail
- 13 E-Z Tilt™ Sash Design with Routed Flush Mount Dual Tilt Latches
- 14 Twin Vent Stops
- 15 Triple-Pane Glass Options Available

### STANDARD

- Sunshield® Virgin Vinyl with Titanium Alloy Compound
- Main-Frame Jamb Depth Dimension of 3 1/4"
- Patented Fusion Welded Frame and Sashes
- Half Screen Standard, Full Screen is Available
- Constant Force Balance System

#### Constant Force Balance System



#### Available Colors



Arctic White



Desert Sand



Classic Clay

# 2900 SERIES

Replacement Double Hung

DOUBLE HUNG | HORIZONTAL SLIDER  
FIXED PICTURE | SPECIALTY SHAPES

*The 2900 Series is known for its beauty, design performance, and highest quality. The custom design features make it a great choice for replacement projects when looking for the highest energy efficiency.*

## 2900 SERIES

Replacement Double Hung



DOUBLE HUNG



HORIZONTAL SLIDER



FIXED PICTURE

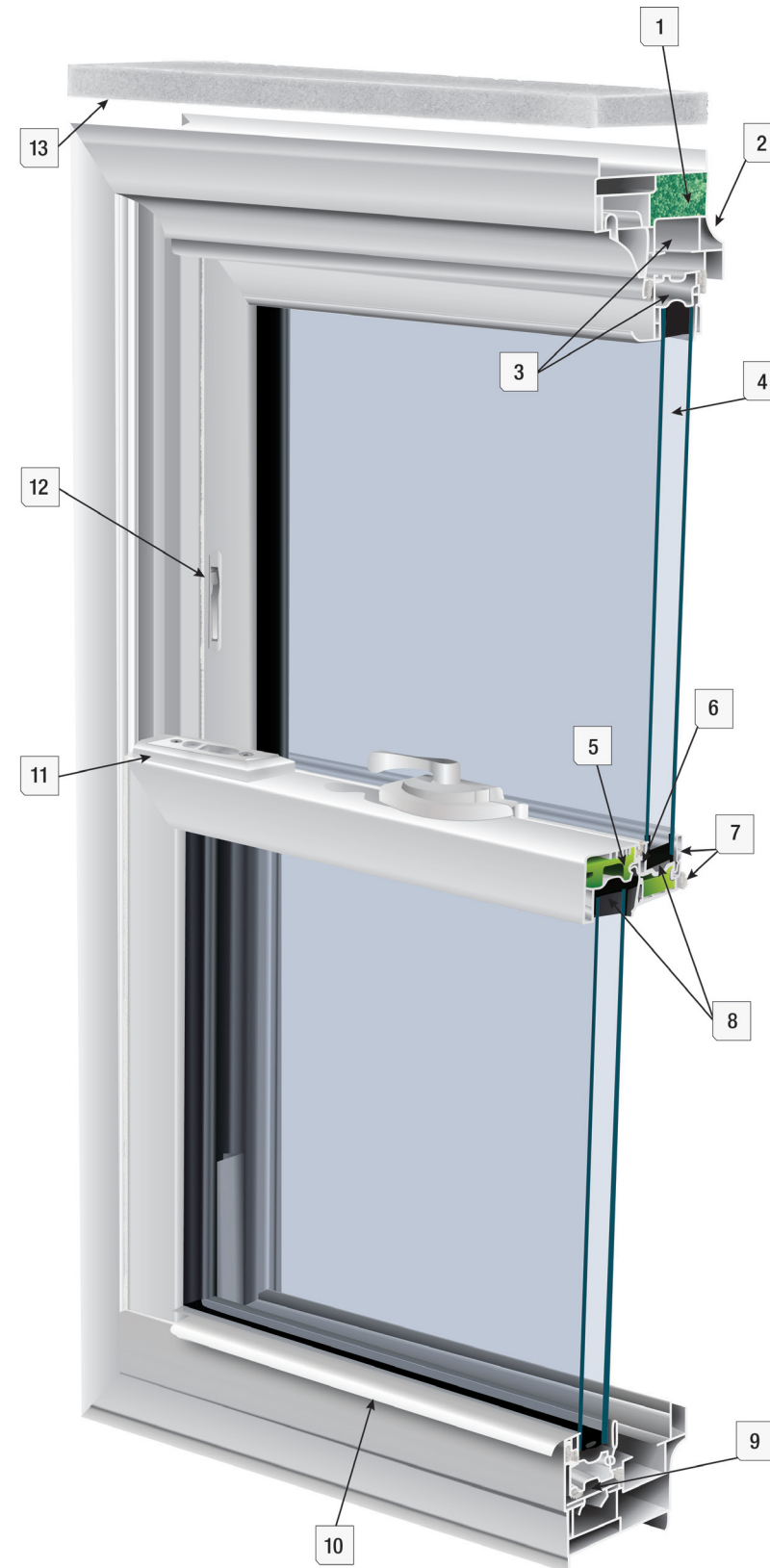


SPECIALTY SHAPES

### NFRC TEST RATINGS

| MODEL   | U-FACTOR | SHGC |
|---------|----------|------|
| 2500 PW | .28      | .26  |
| 2545 DS | .28      | .25  |
| 2945 DH | .29      | .25  |

\*\*Ratings supplied with DS CS 36/Duralite®/Argon/Grids



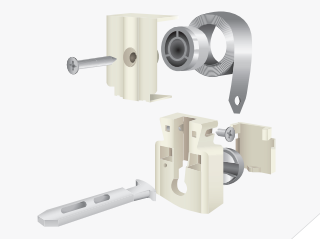
### FEATURES

- 1 Foam-Filled Frame Available
- 2 Beveled Exterior Main-Frame
- 3 Multi-Chambered Sashes and Main-Frame
- 4 7/8" Insulated Double Strength Glass Unit
- 5 Reinforced Innergy™ Rigid Thermal Interlock System Available
- 6 Fully Extruded Interlock at Sash Locking Rail
- 7 Multi-Point Double Barrier-Fin Weather Stripping System Along Sashes and Main-Frame
- 8 Quanex Building Products Most Advanced Warm Edge Spacer Duralite®
- 9 Engineered Pocket Sill Design
- 10 Fully Extruded Lift Rail
- 11 E-Z Tilt™ Sash Design
- 12 Twin Vent Stops
- 13 Insulated Foam Wrap
- 14 Triple-Pane Glass Options Available

### STANDARD

- Sunshield® Virgin Vinyl with Titanium Alloy Compound
- Main-Frame Jamb Depth Dimension of 3 1/4"
- Full Screen Standard, Half Screen is Available
- Head and Sill Expanders
- Patented Fusion Welded Frame and Sashes
- Constant Force Balance System

#### Constant Force Balance System



#### Available Colors



Arctic White



Desert Sand



Earth Brown

# 2700 SERIES

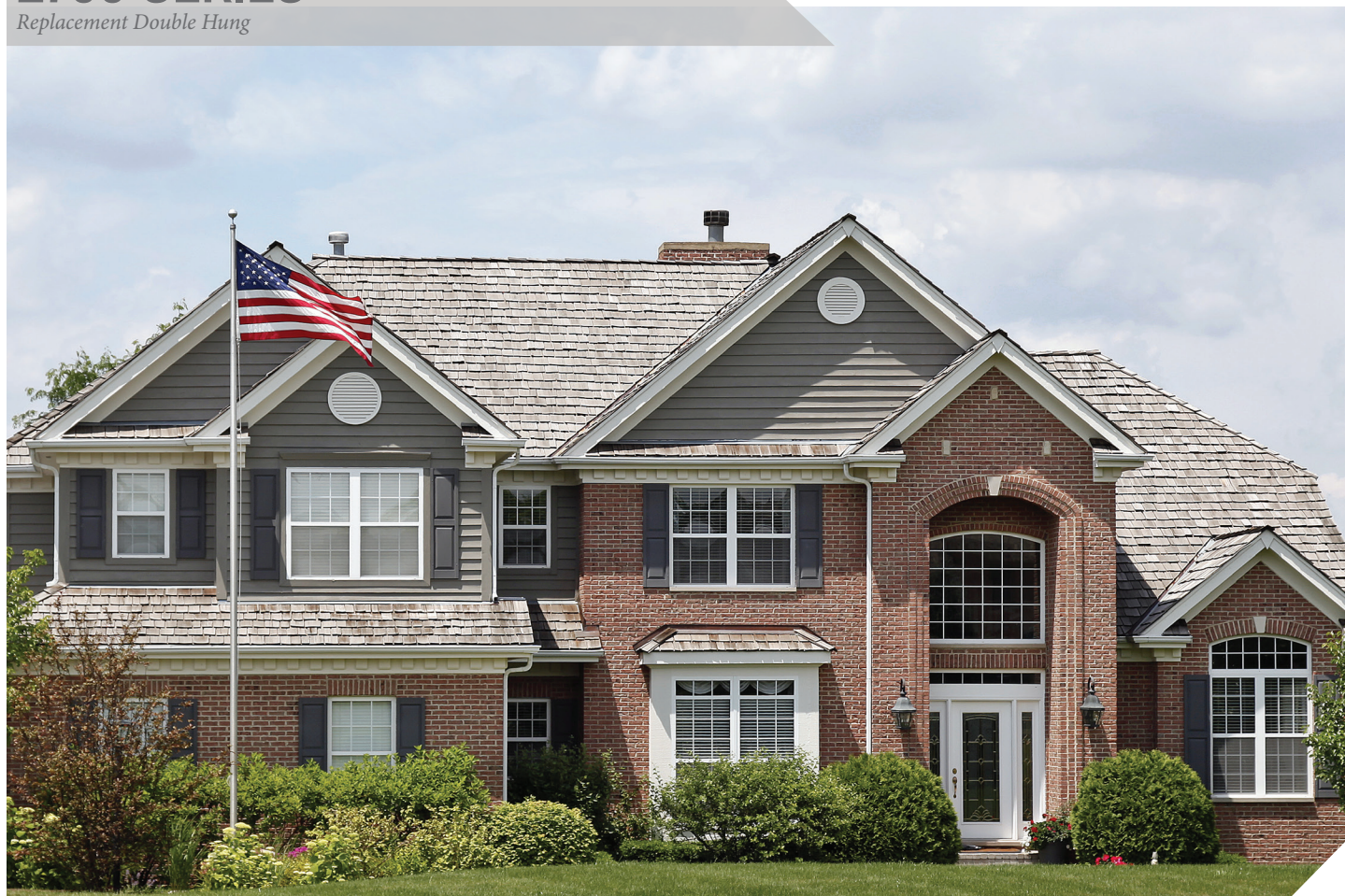
Replacement Double Hung

DOUBLE HUNG | HORIZONTAL SLIDER  
FIXED PICTURE | SPECIALTY SHAPES

*The 2700 Series combines uncompromised technology and quality with craftsmanship to create a window that maintains efficiency and beauty for many years.*

## 2700 SERIES

Replacement Double Hung



DOUBLE HUNG



HORIZONTAL SLIDER



FIXED PICTURE

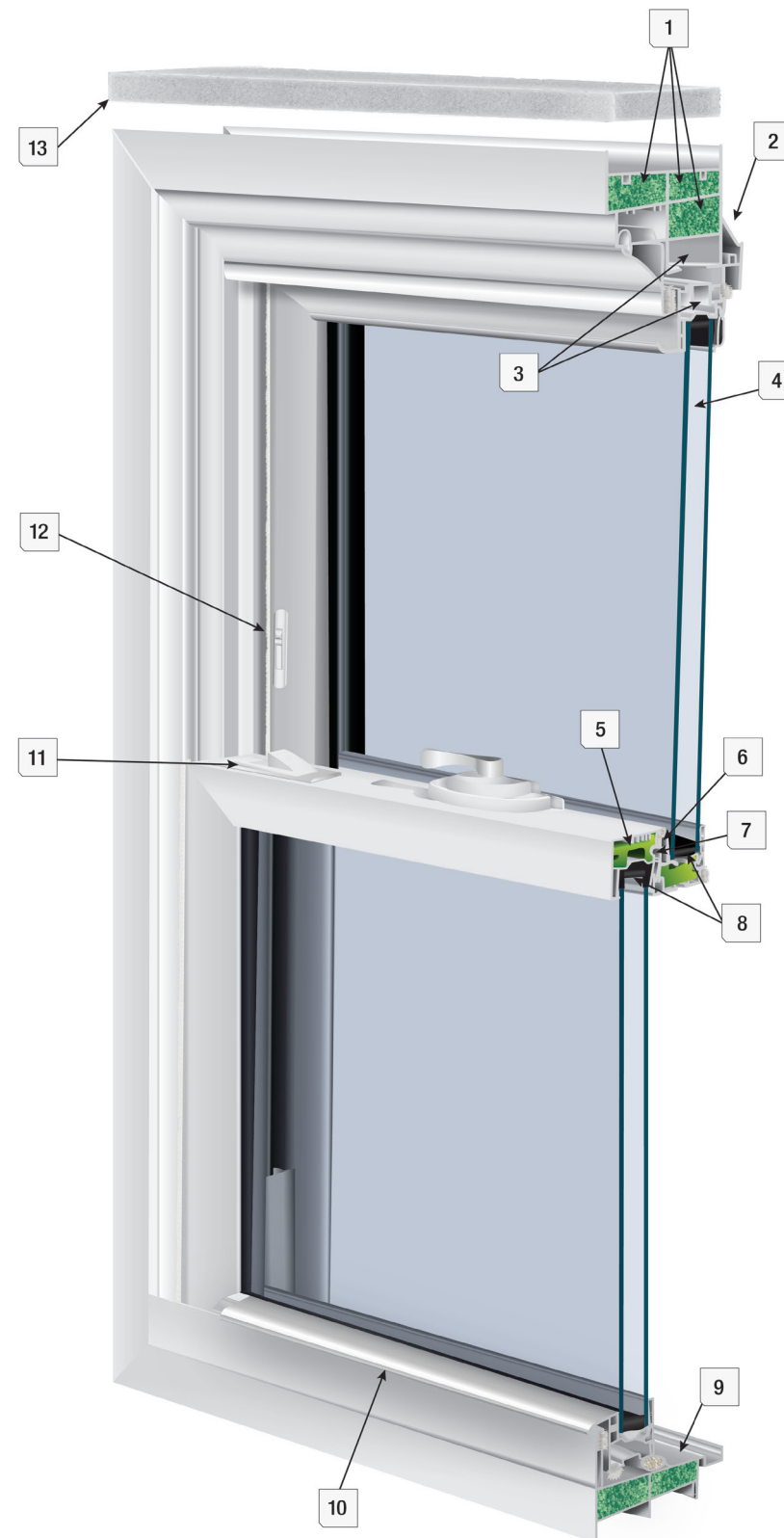


SPECIALTY SHAPES

### NFRC TEST RATINGS

| MODEL   | U-FACTOR | SHGC |
|---------|----------|------|
| 2700 DH | .28      | .25  |

\*\*Ratings supplied with DS CS 36/Duralite®/Argon/Grids



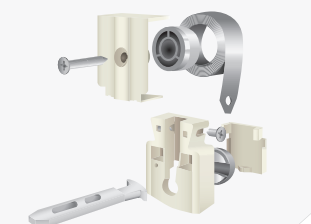
### FEATURES

- 1 Foam-Filled Frame Available
- 2 Beveled Exterior Main-Frame
- 3 Multi-Chambered Sashes and Main-Frame
- 4 7/8" Insulated Double Strength Glass Unit
- 5 Reinforced Innergy™ Rigid Thermal Interlock System Available
- 6 Multi-Point Double Barrier-Fin Weather Stripping System Along Sashes and Main-Frame
- 7 Fully Extruded Interlock at Sash Locking Rail
- 8 Quanex Building Products Most Advanced Warm Edge Spacer Duralite®
- 9 Sloped Sill Design
- 10 Fully Extruded Lift Rail
- 11 E-Z Tilt™ Sash Design with Routed Flush Mount Dual Tilt Latches
- 12 Twin Vent Stops
- 13 Insulated Foam Wrap
- 14 Triple-Pane Glass Options Available

### STANDARD

- Sunshield® Virgin Vinyl with Titanium Alloy Compound
- Main-Frame Jamb Depth Dimension of 3¼"
- Full Screen Standard, Half Screen is Available
- Head and Sill Expanders
- Patented Fusion Welded Frame and Sashes
- Constant Force Balance System

#### Constant Force Balance System



#### Available Colors



Arctic White



Desert Sand



Earth Brown

# 3000 SERIES

Replacement Double Hung

DOUBLE HUNG | HORIZONTAL SLIDER  
FIXED PICTURE | SPECIALTY SHAPES

*The 3000 Series combines the highest quality and technology with the largest selection of premium options at competitive prices for a window that lasts a lifetime.*

## 3000 SERIES

Replacement Double Hung



DOUBLE HUNG



HORIZONTAL SLIDER



FIXED PICTURE

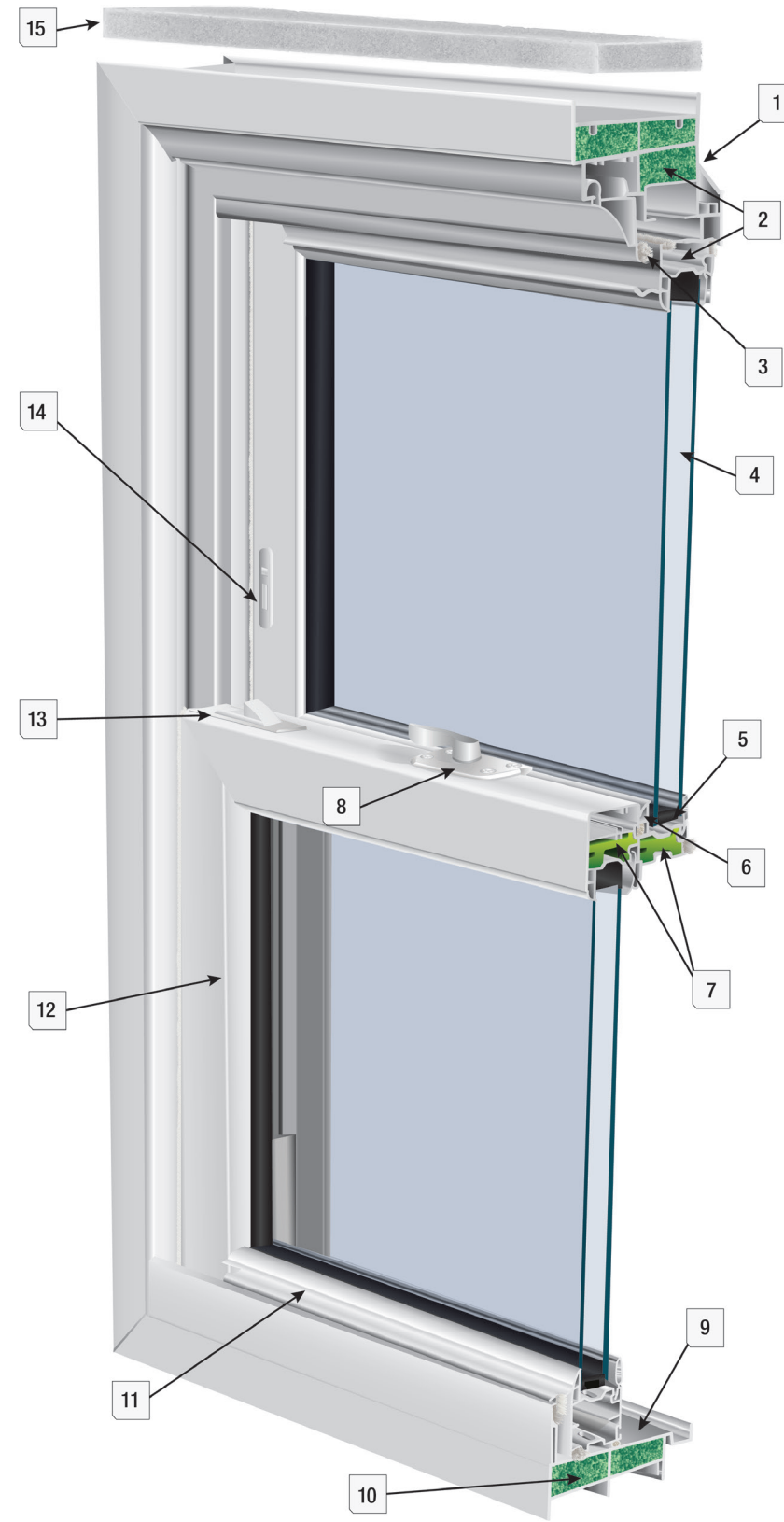


SPECIALTY SHAPES

### NFRC TEST RATINGS

| MODEL   | U-FACTOR | SHGC |
|---------|----------|------|
| 3000 PW | .28      | .26  |
| 3545 DS | .28      | .24  |
| 3145 DH | .28      | .24  |

\*\*Ratings supplied with DS CS 36/Duralite®/Argon/Grids



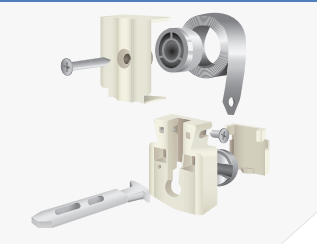
### FEATURES

- 1 Beveled Exterior Main-Frame
- 2 Multi-Chambered Sashes and Main-Frame
- 3 Multi-Point Double Barrier-Fin Weather Stripping System Along Sashes and Main-Frame
- 4 7/8" Insulated Double Strength Glass Unit
- 5 Quanex Building Products Most Advanced Warm Edge Spacer Duralite®
- 6 Fully Extruded Interlock at Sash Locking Rail
- 7 Reinforced Innergy™ Rigid Thermal Interlock System Standard
- 8 Routed Flush Mount Dual Cam Locks
- 9 Sloped Sill Design
- 10 Foam-Filled Frame Available
- 11 Fully Extruded Decorative Lift Rail
- 12 Equal-Lite Cove Molded Sashes
- 13 E-Z Tilt™ Sash Design with Routed Flush Mount Dual Tilt Latches
- 14 Twin Vent Stops
- 15 Insulated Foam Wrap
- 16 Triple-Pane Glass Options Available

### STANDARD

- Sunshield® Virgin Vinyl with Titanium Alloy Compound
- Main-Frame Jamb Depth Dimension of 3 1/4"
- Full Screen Standard, Half Screen is Available
- Patented Fusion Welded Frame and Sashes
- Constant Force Balance System
- Head and Sill Expanders

#### Constant Force Balance System



#### Available Colors



Arctic White



Desert Sand



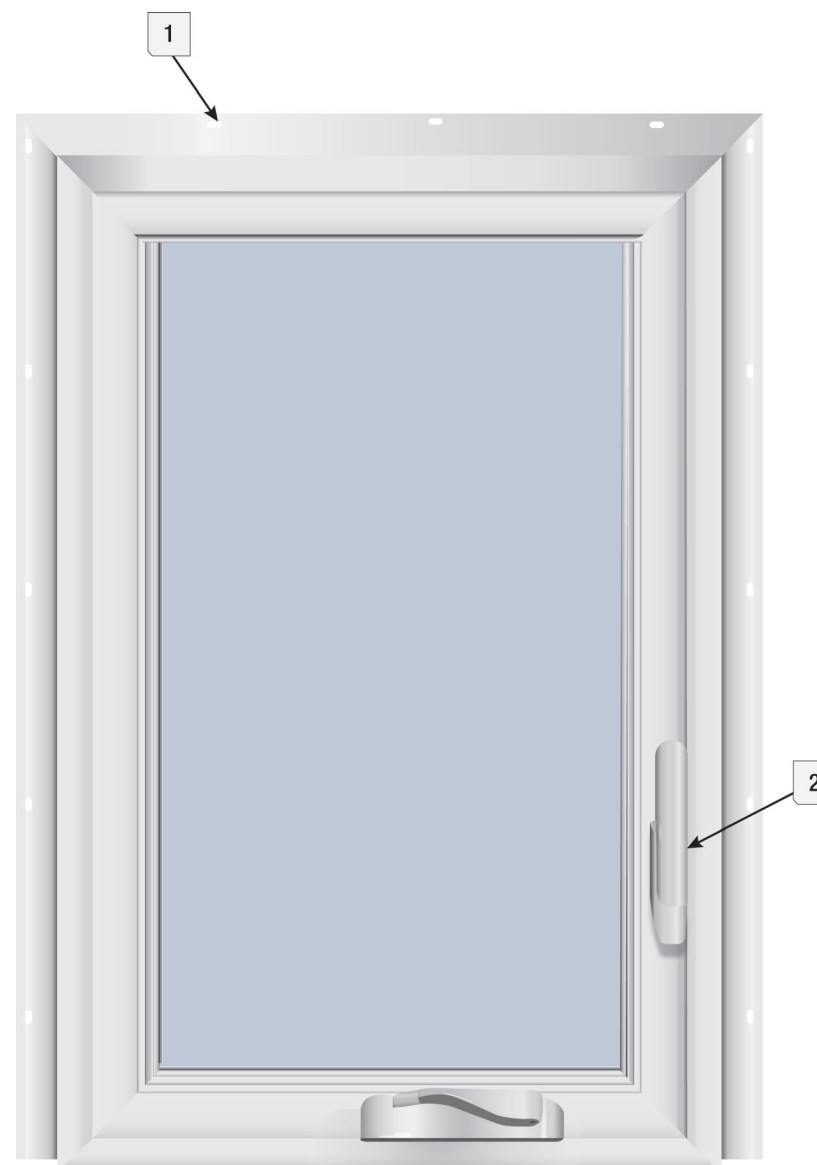
# 4000 SERIES

New Construction

*The 4000 Series Awnings and Casements give a high-end look to any style home. Classic styling. Endless possibilities.*

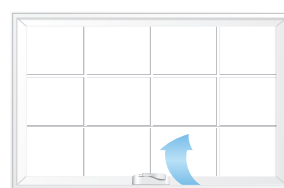
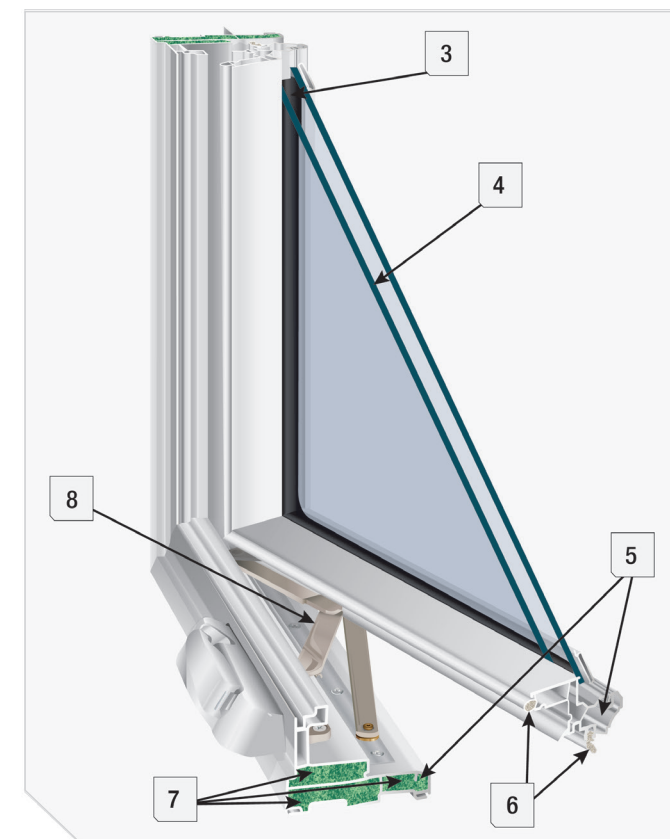
## 4000 SERIES

New Construction

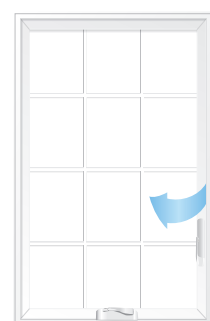


### FEATURES

- 1 Extruded Nail Fin (removable for replacement applications)
- 2 Multi-Point Locking System
- 3 Quanex Building Products Most Advanced Warm Edge Spacer Duralite®
- 4 3/4" Insulated Double Strength Glass Units
- 5 Multi-Chambered Sash and Main-Frame
- 6 Multi-Point Weather Seal System
- 7 Foam-Filled Frame Available
- 8 Egress Hinges Available
- 9 Twin and Triple Uniframe Available
- 10 Beveled Exterior Main-Frame
- 11 Triple-Pane Glass Options Available



AWNING CONFIGURATION

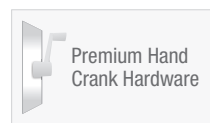


CASEMENT CONFIGURATION

#### NFRC TEST RATINGS

| MODEL   | U-FACTOR | SHGC |
|---------|----------|------|
| 4325 CS | .27      | .25  |
| 4350 AW | .27      | .25  |

\*\*Ratings supplied with DS CS 36/Duralite®/Argon/Grids



Premium Hand Crank Hardware

#### STANDARD

- Sunshield® Virgin Vinyl with Titanium Alloy Compound
- Main-Frame Jamb Depth Dimension of 3 1/4"
- Patented Fusion Welded Frame and Sash

#### Available Colors



Arctic White



Desert Sand







Classic Clay

# DP50 6000 SERIES

SINGLE HUNG | DOUBLE HUNG  
FIXED PICTURE | SLIDER

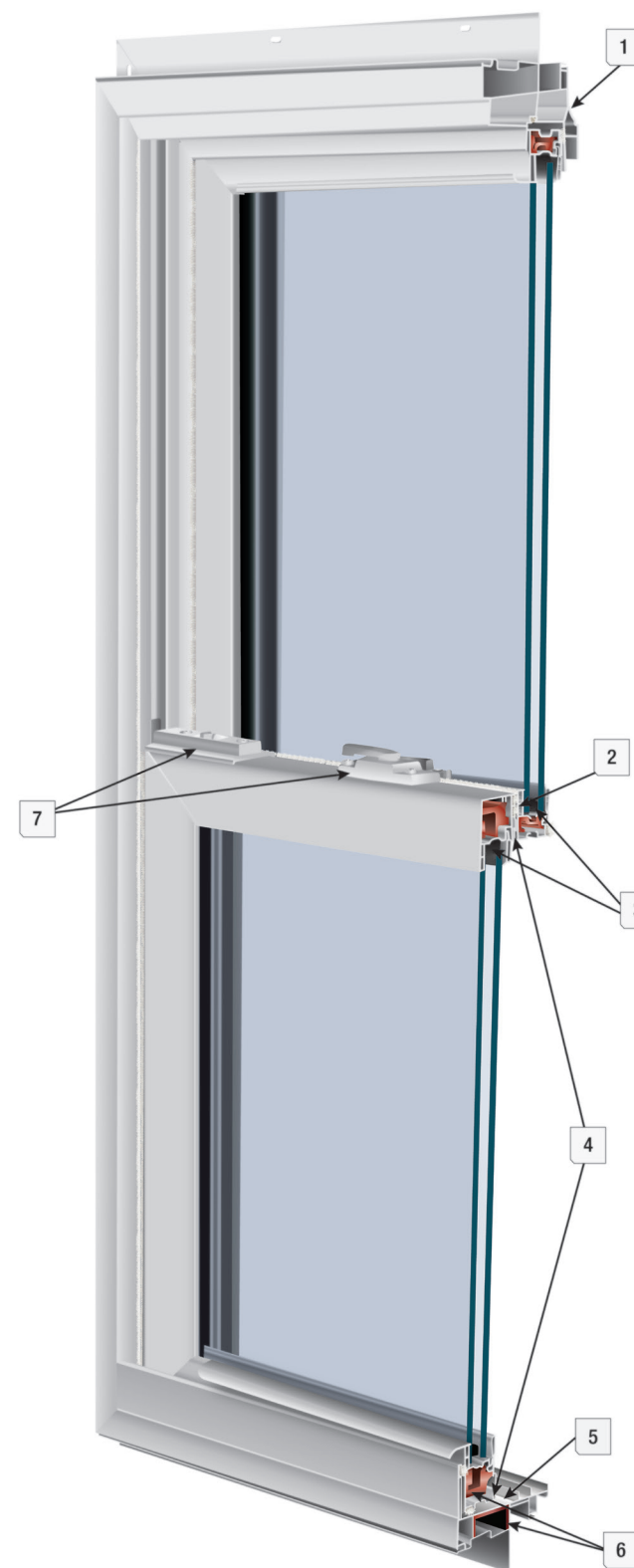
## 6000 SERIES



-  SINGLE HUNG
-  DOUBLE HUNG
-  FIXED PICTURE
-  SLIDER

| NFRC TEST RATINGS |          |      |
|-------------------|----------|------|
| MODEL             | U-FACTOR | SHGC |
| 6000 PW           | .27      | .27  |
| 6000 SH           | .29      | .26  |
| 6000 DH           | .30      | .25  |
| 6000 SS           | .29      | .26  |

\*\*Ratings supplied with DS CS 36/Duralite®/Argon/Grids



*High impact protection. High impact style. Engineered to perform to some of the toughest weather-related standards, providing safety, strength, and peace of mind...anywhere you call home.*

### FEATURES

- 1 3¼" Beveled Exterior Main-Frame Includes Integral Nailing Flange and Masonry Clip Receiver for Installation Flexibility
- 2 Patented Sash to Frame Interlock to Help Keep Sashes Secure in High Wind Conditions
- 3 Quanex Building Products Most Advanced Warm Edge Spacer Duralite®
- 4 Multi-Point Weather Seal System
- 5 Sloped Sill Configurations for Multiple Architectural Applications
- 6 Impact Resistant Fully Reinforced Sashes and Main-Frame
- 7 High Performance Structural Design with Industrial Strength Hardware to Help Provide Superior Break-In Resistance Over Standard Window Systems
- 8 Product Rating-H-R50 1219X1829, Referenced Standard AAMA/WDMA/CSA 101/IS2/A440-05
- 9 Multi-Chambered Sashes and Main-Frame

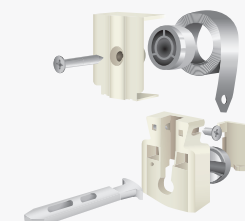
### STANDARD

- Sunshield® Virgin Vinyl with Titanium Alloy Compound
- Patented Fusion Welded Frame and Sashes
- Constant Force Balance System

SCAN the Code to Review Structural Ratings.



#### Constant Force Balance System



#### Available Colors

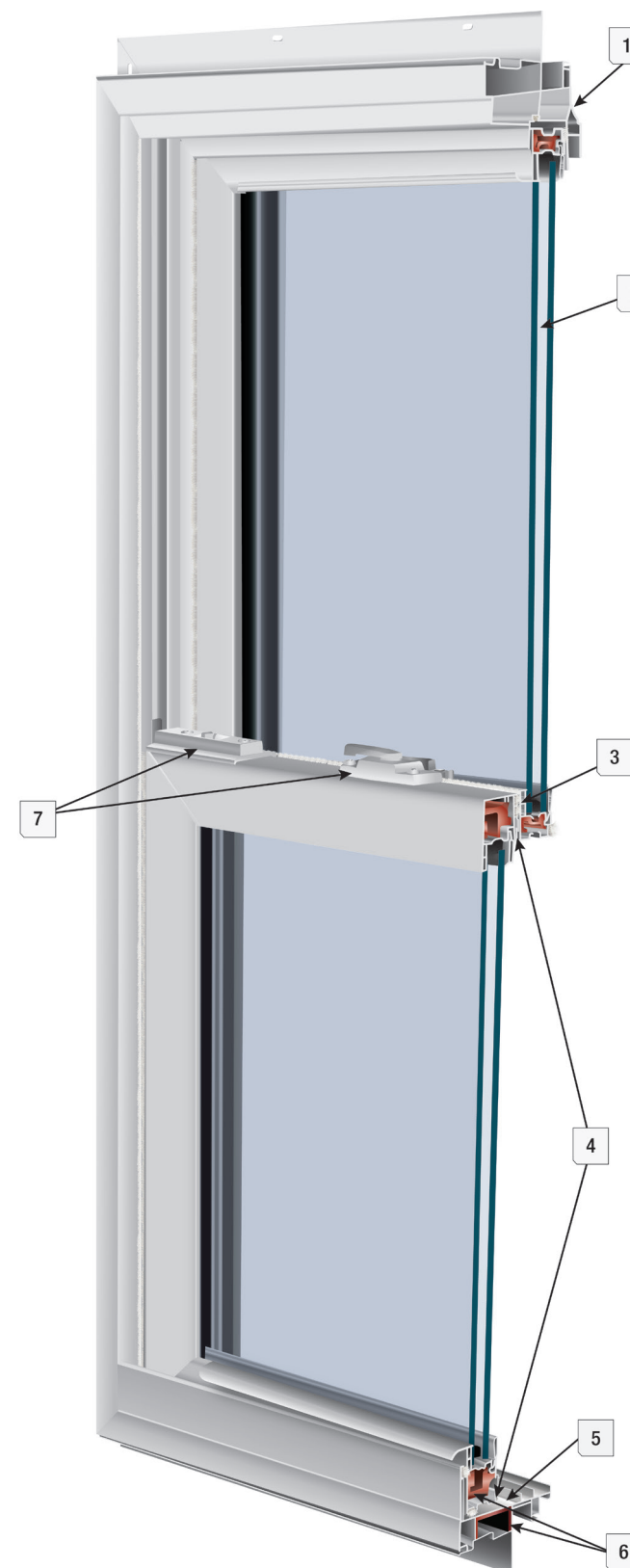


# IMPACT 6000 SERIES

SINGLE HUNG | DOUBLE HUNG  
FIXED PICTURE | SLIDER

*High impact protection. High impact style. Engineered to perform to some of the toughest weather-related standards, providing safety, strength, and peace of mind...anywhere you call home.*

## 6000 SERIES







### FEATURES

- 1 3/4" Beveled Exterior Main-Frame Includes Integral Nailing Flange and Masonry Clip Receiver for Installation Flexibility
- 2 Saflex® Laminated Glass with a PVB Thickness of .090 Ensures 24-Hour Protection from Storms, and Greatly Reduces Sound Transmission
- 3 Patented Sash to Frame Interlock to Help Keep Sashes Secure in High Wind Conditions
- 4 Multi-Point Weather Seal System
- 5 Sloped Sill Configurations for Multiple Architectural Applications
- 6 Impact Resistant Fully Reinforced Sashes and Main-Frame
- 7 High Performance Structural Design with Industrial Strength Hardware to Help Provide Superior Break-In Resistance Over Standard Windows
- 8 Engineered to Meet Coastal Building Code Requirements up to and Including the Specifications of a E 1886/1996, Window Zone 4
- 9 Quanex Building Products Most Advanced Warm Edge Spacer Duralite®

### STANDARD

- Sunshield® Virgin Vinyl with Titanium Alloy Compound
- Patented Fusion Welded Frame and Sashes
- Constant Force Balance System
- Laminated Glass Energy Star Rated Glass Packages Available



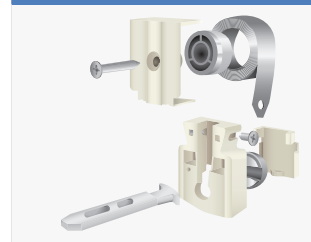
-  SINGLE HUNG
-  DOUBLE HUNG
-  FIXED PICTURE
-  SLIDER

| NFRC TEST RATINGS |          |      |
|-------------------|----------|------|
| MODEL             | U-FACTOR | SHGC |
| 6000 PW           | .32      | .22  |
| 6000 SH           | .34      | .21  |
| 6000 DH           | .35      | .20  |
| 6000 SS           | .33      | .21  |

\*\*Ratings supplied with Lami CS 28/Duralite®/Argon/Grids

| Window         | Max Size    | Min Size        |
|----------------|-------------|-----------------|
| Single Hung    | 48w" x 72h" | 23 1/4w" x 22h" |
| Double Hung    | 48w" x 72h" | 23 1/4w" x 22h" |
| Picture Window | 50w" x 63h" | 12w" x 12h"     |
| Single Slider  | 73w" x 62h" | 22w" x 23 1/4h" |

#### Constant Force Balance System



#### Available Colors



# 9000 SERIES

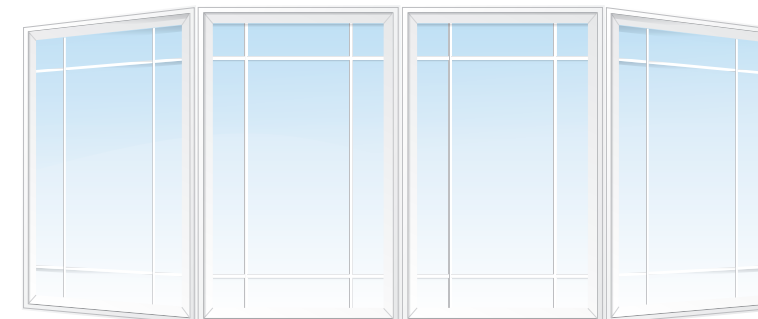
BAY | BOW | GARDEN SERIES

Create a whole new dimension for your home with one of Window Mart® Bay, Bow or Garden windows.

## 9000 SERIES



Bay Configuration



Bow Configuration



Garden Window

Premium hand crank hardware to open side sashes

### BAY/BOW

- 1 Window Series of Your Choice
- 2 Quanex Building Products Most Advanced Warm Edge Spacer Duralite®
- 3 Multi-Chambered Sashes and Main-Frame
- 4 Multi-Point Double Barrier-Fin Weather Stripping System
- 5 Sloped Sill Design or Pocket Available
- 6 3/4" or 7/8" Insulated Double Strength Glass Unit
- 7 E-Z Tilt™ Sash Design Double Hung and Single Hung Windows
- 8 Reinforced Innergy™ Rigid Thermal Interlock System Available
- 9 Full or Half Screens
- 10 Twin Vent Stops (Double Hung Only)
- 11 Beveled Exterior Main-Frame
- 12 Extruded Interlock at Sash Locking Rail
- 13 Fully Extruded Lift Rail
- 14 1 1/4" Oak Head and Seat Board
- 15 Laminated Vinyl Exterior Wood
- 16 Foam-Filled Frame Available
- 17 Replacement Only
- 18 Triple-Pane Glass Options Available

### GARDEN

- 1 Special Order Option
- 2 Tempered Glass Standard
- 3 Triple-Pane Glass Options Available



SINGLE HUNG



DOUBLE HUNG



FIXED PICTURE



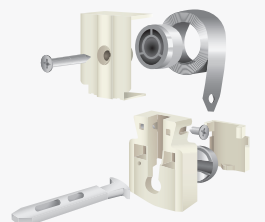
CASEMENT

\*\*Ratings determined by selected series.

### STANDARD

- Sunshield® Virgin Vinyl with Titanium Alloy Compound
- Main-Frame Jamb Depth Dimension of 3 1/4"
- Patented Fusion Welded Frame and Sashes
- Constant Force Balance System

### Constant Force Balance System



### Available Colors



Arctic White



Desert Sand



Classic Clay

# Operational Shapes

SINGLE HUNG | SPECIALTY SHAPES

*The 7100 Series Operational Arched Top windows create a dramatic effect in any style home.*

## Operational



### FEATURES

- 1 Quanex Building Products Most Advanced Warm Edge Spacer Duralite®
- 2 Multi-Chambered Sash and Main-Frame
- 3 Multi-Point Double Barrier-Fin Weather Stripping System Along Sash and Main-Frame
- 4 Sloped Sill Design
- 5 Extruded Nail Fin (removable for replacement applications)
- 6 3/4" Insulated Double Strength Glass Unit
- 7 E-Z Tilt™ Sash Design with Routed Flush Mount Dual Tilt Latches
- 8 Reinforced Innergy™ Rigid Thermal Interlock System Standard
- 9 Half Screens Standard
- 10 Beveled Exterior Main-Frame
- 11 Fully Extruded Interlock at Sash Locking Rail
- 12 Fully Extruded Lift Rail
- 13 Fully Extruded Recessed J-Channel
- 14 Foam-Filled Frame Available

### STANDARD

- Sunshield® Virgin Vinyl with Titanium Alloy Compound
- Main-Frame Jamb Depth Dimension of 3 1/4"
- Patented Fusion Welded Frame and Sash
- Constant Force Balance System



SINGLE HUNG



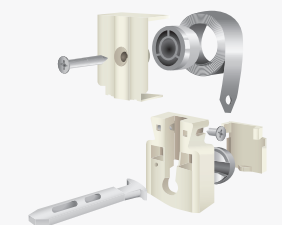
SPECIALTY SHAPES

#### NFRC TEST RATINGS

| MODEL   | U-FACTOR | SHGC |
|---------|----------|------|
| 7100 SH | .28      | .26  |

\*\*Ratings supplied with DS CS 36/Duralite®/Argon/Grids

#### Constant Force Balance System



#### Available Colors



Arctic White



Desert Sand



Classic Clay

# Fixed Architectural

FIXED PICTURE | SPECIALTY SHAPES

## Fixed Architectural



*The Fixed Architectural Shape windows offer beautiful clean lines and graceful curves that compliment other available window styles. Choose from many popular shapes.*



### 7000 SERIES

- 1 Beveled Exterior Main-Frame
- 2 Multi-Chambered Main-Frame
- 3 3/4" Insulated Double Strength Glass Unit
- 4 Quanex Building Products Most Advanced Warm Edge Spacer Duralite®
- 5 Foam-Filled Frames Standard
- 6 Fully Extruded Recessed J-Channel
- 7 Nail Fin Available for New Construction Application

### 2000 SERIES

- 1 Beveled Exterior Main-Frame
- 2 Multi-Chambered Main-Frame
- 3 7/8" Insulated Double Strength Glass Unit
- 4 Quanex Building Products Most Advanced Warm Edge Spacer Duralite®
- 5 Foam-Filled Frames Standard
- 6 Insulated Foam Wrap



FIXED PICTURE



SPECIALTY SHAPES

#### NFRC TEST RATINGS

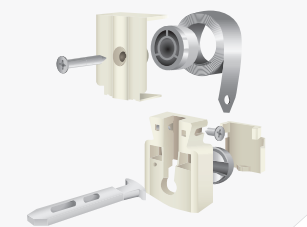
| MODEL   | U-FACTOR | SHGC |
|---------|----------|------|
| 7000 PW | .27      | .27  |
| 2500 PW | .28      | .26  |
| 3000 PW | .28      | .26  |

\*\*Ratings supplied with DS CS 36/Duralite®/Argon/Grids

#### STANDARD

- Sunshield® Virgin Vinyl with Titanium Alloy Compound
- Main-Frame Jamb Depth Dimension of 3/4"
- Patented Fusion Welded Frame

#### Constant Force Balance System



#### Available Colors



Arctic White



Desert Sand



Classic Clay



Earth Brown

\*\*Earth Brown 2000 Series Only

# 5000 SERIES

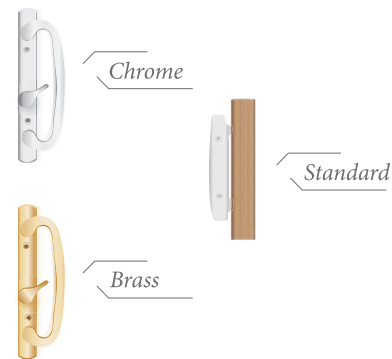
SLIDING | HINGED  
FRENCH DOORS SERIES

*Window Mart® vinyl doors are custom manufactured and are available in a wide range of configurations to create that perfect entry for your home.*

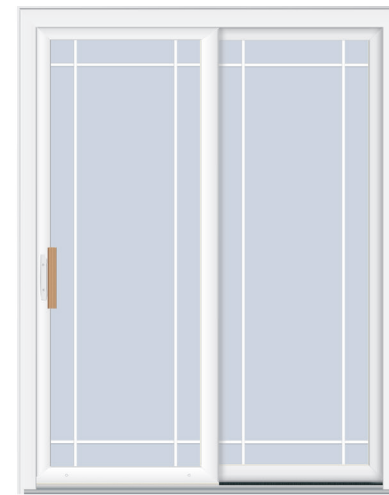
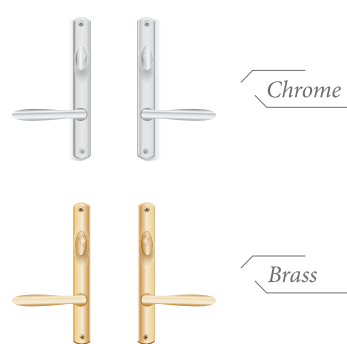
## 5000 SERIES



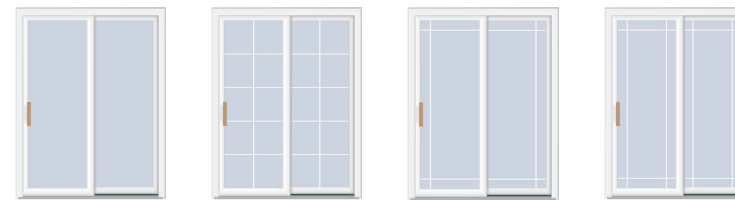
### Sliding Door Hardware Styles



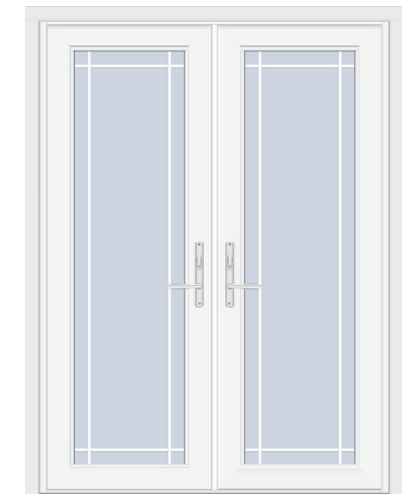
### Hinged Door Hardware Styles



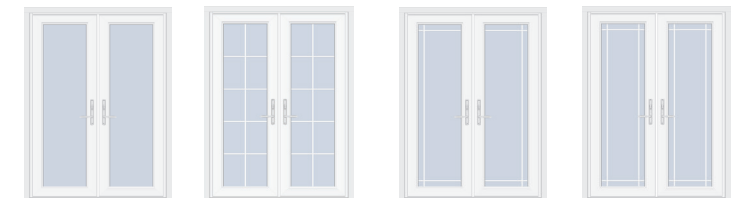
Sliding Door Grid Styles



No Grid Full Grid Queen Anne Grid Prairie Grid



Hinged Door Grid Styles



No Grid Full Grid Queen Anne Grid Prairie Grid

### SLIDING FEATURES

- 1 Quanex Building Products Most Advanced Warm Edge Spacer Duralite®
- 2 Multi-Chambered Sash and Main-Frame
- 3 Multi-Point Double Barrier-Fin Weather Stripping System
- 4 Raised, Non-Corrosive Aluminum Sill with Thermal Break
- 5 7/8" Insulated Glass Unit
- 6 Adjustable Brass Roller System
- 7 Sliding Screen
- 8 Interior Thumb Lock
- 9 Matching Color Hardware with Wood Grain Handle
- 10 Nail Fin Available for New Construction Application
- 11 Triple-Pane Glass Options Available

### HINGED FEATURES

- 1 Quanex Building Products Most Advanced Warm Edge Spacer Duralite®
- 2 Multi-Chambered Sash and Main-Frame
- 3 Multi-Point Double Barrier-Fin Weather Stripping System
- 4 Raised, Non-Corrosive Aluminum Sill with Thermal Break
- 5 7/8" Insulated Glass Unit
- 6 Five Point Locking System
- 7 Extruded Removable Nail Fin
- 8 Brass Hardware with Keylock
- 9 French, Center-Hinged, or Single Unit Designs are Available
- 10 Triple-Pane Glass Options Available

### STANDARD

- Sunshield® Virgin Vinyl with Titanium Alloy Compound
- Patented Fusion Welded Frame and Sash

#### Available Colors



Innovative technologies that  
**make a difference** for  
 our environment.



The innovative technologies that go into Window Mart® window and door systems ensure optimum performance. Superior weather resistance and excellent color retention are hallmarks of these technologies.

#### SunShield® Vinyl Compound

SunShield® is an advanced vinyl material developed through an intensive manufacturing process and formulated to withstand the harsh effects of weather and ultraviolet light. This environmentally safe compound exceeds all required materials standards for strength and color retention established by the American Architectural Manufacturers' Association (AAMA®). Products made with SunShield® are warranted against rotting, rusting, cracking, warping, pitting, corroding, peeling, blistering or color failure.

The primary focus of Window Mart's® efforts to promote green building include improved efficiency and reduced impact on the environment and human health. How do **vinyl** windows and doors fit in?

Numerous studies have proven that vinyl-based building materials are effective and responsible alternatives to other building materials.



#### ENVIRONMENTAL ADVANTAGES

- **Energy efficient**  
Vinyl windows require 1/3 less energy to produce than aluminum and steel windows.
- **Reduces waste**  
More than 99% of all vinyl ends up in the finished products.
- **Thermal performance**  
Window frames and sashes constructed of vinyl maintain interior comfort and reduce energy consumption.
- **Long life-span**  
Products can last for decades; then be recycled into new products, extending the material life-span even further.
- **Sustainable**  
Nearly 60% of its principal raw material is derived from common salt.
- **Durable**  
Vinyl and composite building products will not rot or corrode and do not require frequent cleaning and painting like other materials, reducing the use of harsh chemicals and helping conserve resources.

Responsible Manufacturing  
 for a Better World



# INNERGY™

## Rigid Thermal Reinforcements

Innovative  
 Thermal  
 Performance  
 700 Times Better  
 than  
 Aluminum

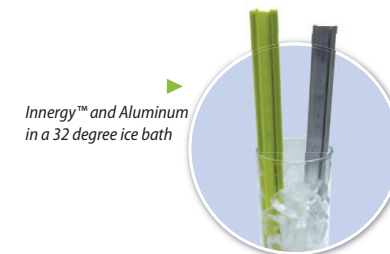


Window Mart® offers Innergy™ Rigid Thermal Reinforcements when reinforcements are needed in the manufacturing of our premium vinyl windows. Innergy™ offers an innovative, energy-efficient alternative to aluminum reinforcements most commonly used.

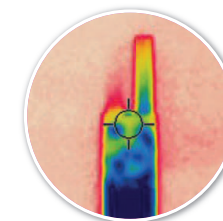
Reinforcements are commonly used at specific points in every window such as the interlocking meeting rails, and also at specific thresholds of oversized windows.

Innergy™ Rigid Thermal Reinforcements are advanced technological inserts designed to slide into window and door chambers for greater support and insulation.

- **Better thermal performance**  
Up to 700 times better than aluminum in material-to-material comparisons
- **Better thermal break**  
Impervious to cold or heat
- **Better protection against condensation**  
Helps prevent staining that can occur with metal reinforcements
- **Better impact testing**  
Resistance to impact versus other reinforcement products
- **Better flexibility**  
Will not permanently set when impacted



Innergy™ and Aluminum  
 in a 32 degree ice bath



Infrared analysis shows  
 major conductivity in  
 aluminum and virtually  
 none with Innergy™\*

\*Photos taken after  
 one hour ice bath



Science for a Better Life